

CREATE A RENOWNED
WORLD BRAND OF ULTRASOUND

Comparison

Instrument model	A20	A26	A30	A31	A36
Comparison function					
Spike wave	✓		✓	✓	✓
Square wave		✓			✓
Weld graph illustration	✓	✓	✓	✓	✓
Series storage	✓	✓	✓		✓
RF	✓	✓	✓		✓
Chinese/English	✓	✓	✓		✓
Peak holding	✓	✓	✓	✓	✓
Envelope	✓	✓	✓	✓	✓
Surface amend	✓	✓	✓	✓	✓
Auto gain	✓	✓	✓	✓	✓
DAC	✓	✓	✓	✓	✓
AVG			✓		✓
AWS					✓
Echo compare					✓
Noise immersion	✓	✓			✓
Hot key	✓	✓			✓
Shuttle key	✓	✓			✓



Anyscan-30/36 Ultrasonic Flaw Detector

- Excellent EMI design, good EMC performance
- Simple key & menu settings, easy to access
- Leading technical indexes, abundant & practical additional functions
- Low noise & wide bandwidth amplifying circuit, selectable damping, excellent matching with low and high frequency probes
- 400 MHz real-time hardware sampling, high-fidelity echo pulse

Guangzhou Doppler Electronic Technologies Co.,Ltd.

ADD: Room 104 & 405, Building C, Yushu Industrial Park,
Science City, Guangzhou 510663, China.

TEL: (+86)20-8226 0495

FAX: (+86)20-8208 6200

E-mail: cndoppler@cndoppler.com

Web: Http://www.cndoppler.com

Guangzhou Doppler Electronic Technologies Co., Ltd.



Anyscan-30/36 are the choicest models that DOPPLER devotes to NDT industry, not only easy operating, concise & practical appearance, but also adhering to the idea of outstanding products, industry-leading, great performance. And more advanced technical indexes than other similar products, with abundant & practical additional functions, brings more convenient & efficiency to users.

Performance

ITEM	PARAMETER
Linearity error of horizon:	≤ 0.1%
Linearity error of vertical:	≤ 3%
Surplus sensitivity:	≥ 62dB
Dynamic range:	≥ 40dB
Far field resolution:	≥ 30dB
Operating method:	Single element, Dual element
Transmitter pulse:	A30: 400V negative spike wave A36: square wave/negative spike wave
Working frequency range:	0.5~22MHz, frequency optional
Pulse repetition frequency:	40/250/1000Hz
Sampling frequency:	400MHz hardware real-time sampling
Detection range:	A30: 0.5~9999mm(steel LW), A36: 0.5~15000mm(steel LW) adjustable continuously,switchable steps
Sound velocity range:	1000~15000m/s, adjustable continuously, switchable steps
Scan delay:	A30: -10~2000mm A36: -10~5000mm
Probe delay:	0.00~199.9 μs
Damping:	50/100/200/500 Ω
Menu language:	English/Chinese
Gain adjust:	0~110dB, 0/0.1/0.5/1.0/2.0/6.0dB step adjustment
Rectification:	Positive, Negative, Full wave, RF
LCD display:	5.7" high brightness TFT LCD,640 x 480 pixels
Measurement mode:	Flank or peak
Parameter storage:	Store 30 groups common-use detection parameters and 470 groups test result data
Alarm:	Hardware alarm, sound and light two methods, alarm models including positive mode, negative mode and DAC mode
Communication Interface:	A/B USB
Operating temperature range:	-10~+50°C
Battery specification:	Lithium battery, continuance supply power for more than 6 hours
Power supply:	AC: 100~240V ; DC: 15V~4A
Complete appliance weight:	1.4KG (including battery)
Protection level:	IP 54

Features



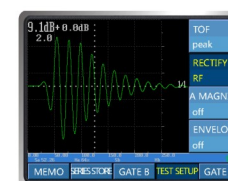
Weld Graph Illustration



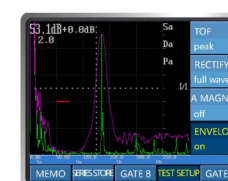
DAC Function



AVG Function



RF Display Function



Envelop Function

- **DAC function:** Up to 10 points to make DAC curve, Auto-generated evaluation line, sizing line, rejection line.
- **AVG function:** Auto-generated AVG curve by sampling one point from >3N zone, easy to save and recall.
- **Curve surface amend function:** Auto-amend test result of arc surface workpiece.
- **Peak holding:** Peak echo recording.
- **Envelope function:** Track changing of peak echo recording.
- **Auto gain function:** Auto-set amplitude of selected echo to the desired value.
- **Illustrated function for the weld test:** Direct display of weld graphics, easy and clear to see the flaw position.
- **Intelligent instrument calibration:** Include fast calibration of material velocity, probe delay, probe angle.
- **Channel setting and data storage:** Easy to save and record 30 groups of detection parameters and 470 groups of data results.
- **Zoom function:** Zoom in/out of wave display zone, take full use of the screen.
- **Gate magnify function:** Zoom in the gate zone to the whole wave display zone, easy to observe the wave details.
- **Square wave emitting function (A36):** 400V negative square wave emitting, frontier descending time is about 5ns, pulse width range is 30~500ns.
- **AWS function:** Meet the weld defects standard of AWS D1.1.
- **Echo compare function:** Easy to make comparison of echo details for the same defect through tests from different direction in the field.
- **Noise immersion function:** Reduce noise interference when high amplitude spike echo applied.
- **Hot keys menu:** Hot keys including "auto gain", "peak holding", "full screen detection", etc., shown in each page. Easy to use.